

# Tibia bone loss

- Male, 43 years, bullet injury 4 yrs ago
- No initial x-rays available
- Multiple debridements
- External Fixator, then cast application
- Complete instability and shortening
- No weight-bearing possible



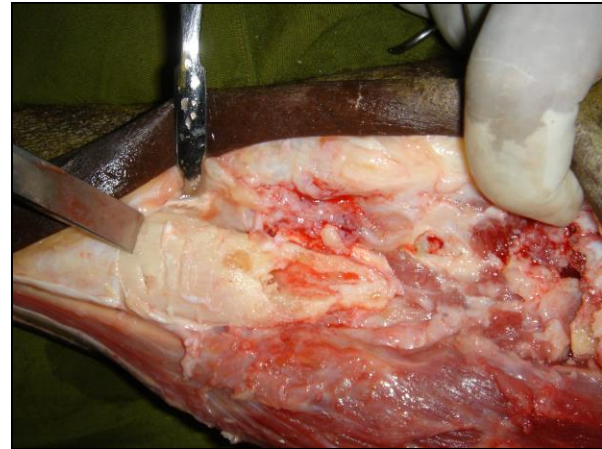
# X-ray

- bone defect tibia
- nonunion fibula
- Shortening
- Advanced osteoporosis due to inactivity



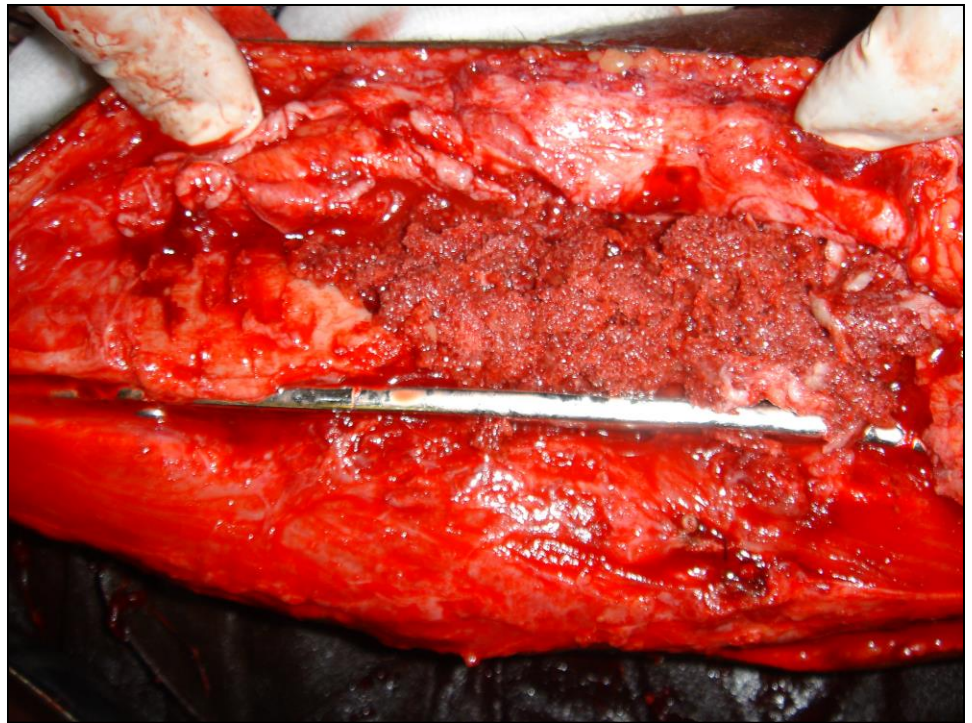
# Procedure

- Lateral approach
- Excision of non-union
- Decortication
- Opening of intra-medullary canal
- Shingling
- Plate fixation of tibia and fibula



# Procedure

- cancellous bone graft from bilateral posterior iliac crests for tibia (fibula = hypertrophic non-union)



# Result

- No initial postop complications
- Application of slab cast postop for 6 weeks
- Mobilization out of cast daily

